



2022 LOCAL CONTENT AND SERVICE REPORT TO THE COMMUNITY

KTWU Television, through its local destinations for unique content, strives to be an innovative, multi-media leader that entertains, educates and presents diverse perspectives that serve the local community.



KTWU reaches viewers with the stories of Kansas: the people, their history and their spirit.

As the first public television station in the state, KTWU leads the way in all technologies that benefit the community at large. Demonstrated through several local television programs and many community projects, KTWU provides unique content that connects with our viewers and enriches the lives of those we reach.

In 2022, KTWU provided these vital local services:

- Issue-oriented local programming that addresses the needs and concerns of the community at large.
- Results-oriented initiatives providing resources to educators working with students of all ages – preschool through college.
- Bringing local and state history alive through sharing stories of sacrifice, innovation and success that build a sense of pride for Kansans.

Available in 39 counties across Kansas, Missouri, Nebraska and Oklahoma, KTWU engages communities locally, regionally and nationally with programming and outreach efforts.

Licensed to Washburn University, KTWU's partnerships throughout educational communities and service organizations create the largest, most significant and fiscally sound public television organization in Kansas.



2022 LOCAL CONTENT AND SERVICE REPORT IN THE COMMUNITY

KTWU turned 56 on Oct. 21, 2021, preceding the arrival of the **Public Broadcasting Service, PBS**, by five years. Operations mostly returned to normal post-Covid, with the opportunity to resume in-person events and have guests in the station for filming. However, the use of ZOOM continued, allowing guests to be on shows without actually coming to the studio.

2022
HEARTLAND
EMMY® NOMINEE

**EMMY NOMINATION! KTWU was nominated for
“I’ve Got Issues: Remembering Bob Dole” in the Interview/
Discussion Program Category!**

PUBLIC SERVICE ANNOUNCEMENTS ON KTWU

Temple Beth Shalom

- The **Blintze Brunch** is a **Jewish** cultural festival featuring traditional Jewish food with live music and dancing. More than 85 percent of Blintze Brunch guests are outside of the Jewish community.

Mulvane Museum

- The **Mulvane Art Fair** is a juried event that features 80 artists working in a variety of media from across the state, region and country. Proceeds from the Mulvane Art Fair support the mission and programs of the Mulvane Art Museum.

Brown v. Board Sumner Legacy Trust & Brown v. Board of Education National Historic Site

- The **Brown vs. Board 67th Anniversary** event celebrated the 67th anniversary of the historic Brown v. Board of Education Supreme Court ruling that ended school segregation. In the case that would become famous, a plaintiff named Oliver Brown filed a class-action suit against the Board of Education of Topeka, Kansas, in 1951, after his daughter, Linda Brown, was denied entrance to Topeka’s all-white elementary schools.

Washburn University

- **The Sunflower Music Festival** brings the world’s greatest musicians to Northeast Kansas to perform in eight free concerts in June. Since its founding in 1987, the tradition of the Festival is excellence, cultivated selection by selection, instrument by instrument, year after year. The event includes orchestra, chamber ensembles and jazz music.

MEETING A PBS LEGEND

At her very first PBS General Manager Conference in May 2022, our GM Val VanDerSluis had the honor of meeting PBS NewsHour Anchor Judy Woodruff before she stepped down at the end of 2022. Val was able to tell Judy just how much her daily presence would be missed after her five decades as a great influencer and mentor for women in politics and news. Val took the opportunity to share her feelings about this visit with our viewers on social media.





2022 LOCAL CONTENT AND SERVICE REPORT IN THE COMMUNITY

SHARING LOCAL POLITICS

“Red State Blue Governor: Kansas’ Kathleen Sebelius”

This documentary was produced by Bob Beatty, Washburn University professor and chair of the political science department, and Lyall Ford, KTWU’s very own producer! Former Kansas Governor Sebelius was a studio guest when the documentary was featured during our August Pledge Drive, allowing viewers to get a behind-the-scenes account from the film’s subject!

Kansas State of the State 2021

Governor Laura Kelly delivered the address in person to a joint session of the Kansas House of Representatives and Senate in the House Chambers. The entire address plus the Republican response aired on KTWU thanks to Smoky Hills Public TV providing us with the broadcast to share with our viewers.



COMMUNITY EVENTS

The **10th Annual KTWU Golf Classic Fundraiser** offered KTWU supporters a relaxing time on the tranquil course at the Topeka Country Club, while delivering a well-needed day of camaraderie with community leaders and public television supporters and providing fundraising.

Lights, Camera, Auction!, our popular fundraising event, was solely online for the second year. Merchandise and services were donated by businesses and individuals in support of local public television in our forty-county viewing area that reaches more than one million potential viewers. Select items were offered for purchase in the station’s lobby, which led to extra sales when patrons picked up their purchases.

Each year except for 2020 (because of the pandemic), the Washburn University School of Music, along with KTWU, creates **“Washburn Holiday Vespers” (Vespers)**, a holiday masterpiece that features University students and staff. The event returned this year, allowing us to decorate the set, film the performance, then run it on KTWU.

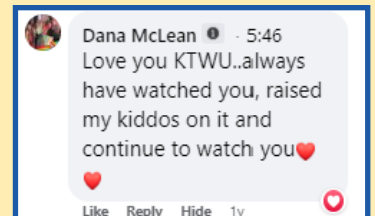
Although **“Vespers”**, **“Capital Holiday”** had created its own following and continued airing in the holiday line-up. The show features performances by local musicians in various locations throughout the community. Music acts featured were: Free State Brass Band, a British style brass band; professional Pianist Marilyn Foree; Inspire host, Washburn University professor and vocalist Amber Dickinson with husband, Dan Denton; and Washburn University Cello Ensemble.



2022 LOCAL CONTENT AND SERVICE REPORT IN THE COMMUNITY

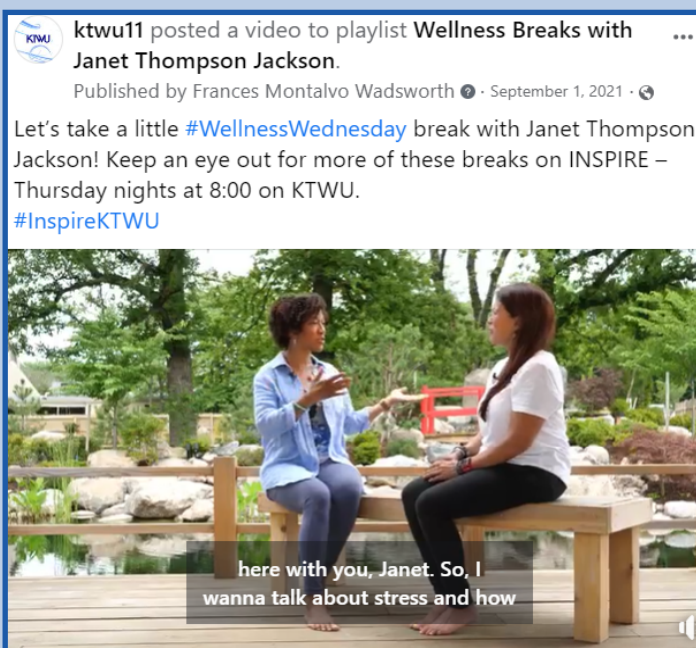
NEW COMMUNITY EVENT

Women on Wheels, a car show geared toward women who are crazy about their vehicles, no matter how many wheels they have, was first held in August 2021, with the second event held in June, 2022. Awards and special trophies were presented for this growing event! In addition to members of the public bringing their vehicles, staff members were encouraged to enter their vehicles, leading to a light-hearted competition of who would receive the “Best Staff Entry” trophy to display in their office for the next year!



WELLNESS PROGRAMMING

Not only did **“INSPIRE”** run “Wellness Wednesday” breaks with former **“IGI”** host Janet Thompson Jackson, but we also shared some other fun ways to get fit, including an episode of **“Working Capital”**, when SWSC Goat Yoga had a cattle audience!



2022 MISTER ROGERS' NEIGHBORHOOD® SWEATER DRIVE

"All of us, at some time or other, need giving or receiving a sweater, each one of us bring to this world. That's one of the things that connects us as neighbors — in our own way, everyone is a giver and a receiver." – Fred Rogers

The **KTWU 5th Annual Mister Rogers Coat and Sweater Drive** was different this year as we joined forces with the **Doorstep Souper Bowl/Pantry Challenge**. Doorstep is a community organization provides emergency and short-term needs to those in the community, including a food, clothing, rent, transportation, prescriptions and utility payments.

This led to:

- 88+ loads of laundry
- Uncountable trips to the drop zones weekly to gather donations. **One generous volunteer went weekly to his local fire station to collect for us!**
- A grand total of 88 bags of goods, which is at least 1,650 items.

In addition to an immense amount of community help and involvement, station staff worked on promos, social media posts, on-air spots, fliers, sorting, tagging and carting bags in/out. It was another beautiful day in our KTWU neighborhood!



KTWU HOLDS SOCIAL MEDIA CONTESTS!



KTWU held a social media "Welcome Back to School and Fall Contest!" that asked people to tell us how they started the school and/or Fall season. The winner received this basket filled with goodies!

Drinking water is important to your health! This water bottle was the prize in our second social media contest!

Contest Winner

Debbie Vossen

KTWU Infuser Bottle



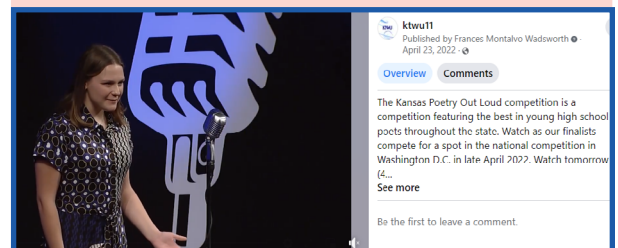
Father's Day "Dad Jokes" Contest

The most laughs wins!



For our Fathers' Day "Dad Jokes" Contest, we didn't decide the winner - our social media followers did by voting with "laughs" on the post they liked!

Kansas Poetry Out Loud Debuts on KTWU



ktwu11
Published by Frances Montalvo Wadsworth
April 23, 2022
Overview Comments
The Kansas Poetry Out Loud competition is a competition featuring the best in young high school poets throughout the state. Watch as our finalists compete for a spot in the national competition in Washington D.C. in late April 2022. Watch tomorrow!
See more
Be the first to leave a comment.

2022 LOCAL CONTENT AND SERVICE REPORT STORIES OF IMPACT - “!NSPIRE”

“!NSPIRE” is a series for **WOMEN** that features a powerhouse panel of hosts who discuss issues impacting women. The series highlights women making moves in business, career, family and history, and displays their passion to inspire change in their local, national and world communities.

The series brings viewers to the dining room table to join in conversation with our *five distinctively different hosts* as they discuss the issues impacting and inspiring women today. The show also offers studio and field segments. **!NSPIRE** completed its 1st Season and started its 2nd Season in FY22.



!NSPIRE HOSTS

Betty Lou Pardue, KTWU underwriting team member and pledge coordinator who handles major and planned gifts, beloved home-grown celebrity, devoted pet advocate

Danielle Norwood, radio talk show host and television anchor

Amy Kelly, U.S. Trademark Office attorney, avid community volunteer, parent

Amber Dickinson, Washburn University associate professor of political science

Leslie Fleuranges, founder, owner and comforter-in-chief of Tender Loving Care Pet Nursing Hotel, a luxury pet hotel with an emphasis on caring for pets with special needs; marketing, innovation, and product development leader; devoted dog mom.

FY22 EPISODES

POSITIVE ASPECTS OF MENOPAUSE: A time for women to take a fresh look at relationships, professions & their own health • reminding women to spend their time on what is meaningful to them

Sarah Bell, historian

Linessa Frazier, activist

Sarah Starr, host, “Happy Yoga”

CAREGIVING: Importance of maintaining mental & physical health for caregivers • emotional, financial & physical toll that comes with the role of caregiving • available resources

Denise Selbee-Koch & Jennifer Woerner, Dirty Girl Adventures

Andrea Etzel & Jordan Roermerman, Kansas Tourism

Marci Penner, Kansas Sampler Foundation

MEDICAL CANNABIS: Kansas is surrounded by states that have passed medical cannabis legislation • where we are in process of passing legislation to approve use of cannabis for medical purposes

Cheryl Clark, Dare to Dream Event Management

Abbey Brown, The Brownstone Event Venue



2022 LOCAL CONTENT AND SERVICE REPORT

STORIES OF IMPACT - “!NSPIRE”

BACK TO SCHOOL POST-COVID: Difference a year has made in lives of children in school & on moms who worked from home & homeschooled their kids full-time • How school districts will manage returning students at all levels of learning • COVID impact on traditional school routine • changes to expect

Dr. Tiffany Anderson, *superintendent, Topeka Public Schools*

Kaylee Soderlund (Erickson) *administrative intern, Jardine Elementary*

WOMEN IN THE WORKFORCE: Challenges • history • progress • how far we have to go • COVID impact

Michelle Cuevas Stubblefield, *senior vice president of strategy, Greater Topeka Partnership*

Traci Jepson, *CEO, Jepson Solutions, LLC*

NEW AND EXPECTING MOTHERS: Physical & mental changes • myths • taking care of you

Tammy Schrickel, *director, Little Learners at Washburn Tech*

Kelsey Zubiaur, *pediatrician, Topeka Pediatrics*

HUMAN TRAFFICKING: Most sex trafficking victims are female, average 12-14 years old at entry & may be manipulated by romance, substance abuse & cultural disorientation • many don't realize they are a victim • what to look for & how to help • available victim resources

Becca Spielman, *program director, YWCA Center for Safety and Empowerment*

Christina Chavez, *victim services coordinator, YWCA*

Charlie Tebow, *survivor & missing youth specialist, KVC*

CYBERWORLD: Side hustles • building brands on social media • online dating • how to protect yourself from cyberstalkers

Cherryl Delacruz, *mathematics teacher, Highland Park High School*

Katie Vanblaricum, *full-time Etsy business owner*

SEASON IN REVIEW: Hosts' favorite stories & those that impacted them the most • what viewers can expect for season 2

SEASON 2

CANNABIS IN KANSAS: The history & stigmas of cannabis

Kelly Rippel, *co-founder, Kansans for Hemp*

Amy Reid, *president, Kansas Cannabis Coalition*

Dr. Currie Myers, *consultant & retired sheriff, Johnson County, Kan.*

CANNABIS IN KANSAS: THE MEDICINE OF CANNABIS: Medicinal side of cannabis legislation

Kelly Rippel, *co-Founder, Kansans for Hemp*

Leigh Carr, *general Manager, Hippos*



2022 LOCAL CONTENT AND SERVICE REPORT

STORIES OF IMPACT - “!NSPIRE”

CANNABIS IN KANSAS - THE ECONOMY OF CANNABIS: Economic impact of cannabis

Kelly Rippel, co-Founder, Kansans for Hemp

Leigh Carr, general Manager, Hippos

DATE NIGHT: Wine & chocolate pairings • memorable date night meals

Nick Xidis, Hazel Hill Chocolates

Lori Henderson, Crooked Post Winery

WOMEN IN POLITICS: Topics that matter to women • how women in politics can impact process • inspiring future generations of women leaders

Joan Wagon, retired politician

Vicki Schmidt, Kansas Insurance Commissioner

END OF LIFE CARE: Help & comfort hospice & funeral planners can provide during uncomfortable times

Tiffany Brubaker

MARCH OF THE WOMEN’S ARMY: Story of Amazon Army • impact this brave group of women had on labor reform & current-day labor rights by fighting 1920 state law that controlled right to strike

Linda Knoll, author of play “*An Army of Amazons*”, local historian & educator

Kristin Lawson, professor of history, Pittsburg State University

WOMEN IN SPORTS: Women making moves in sports

Kaylee Manns, professional volleyball player

Linda Hargrove, retired women’s basketball coach, WNBA & bronze-winning 1992 Barcelona Olympics team

WOMEN IN AGRICULTURE: Women-owned & operated farming operations

Nancy Vogelsberg-Busch, owner, Bossie’s Best Organic Beef

RAISING CHILDREN WITH SPECIAL NEEDS: Challenges & rewarding experiences of raising children with special needs • support & resources available • importance of parents/caregivers practicing self-care to help manage their own difficult emotions

POLICING SEX IN THE SUNFLOWER STATE: Hypocrisy of law that punished women instead of the men responsible for infecting them with disease • thousands of women imprisoned & subjected to plan of moral reform that focused on value of hard work & middle-class norms for proper feminine behavior

Nichole Perry, author, “*Policing Sex in the Sunflower State*”

Kerry Wynn, assistant professor of History, Washburn University



2022 LOCAL CONTENT AND SERVICE REPORT

STORIES OF IMPACT - “!NSPIRE”

STANDING UP TO VIOLENCE: In U.S. 84% of sexual assault victims are female • worldwide almost 1 out of 3 women have been subjected to abuse (physical or sexual) by an intimate partner • available resources • how women can protect & defend themselves

Megan Stuke, executive director, The Willow Domestic Violence Center

Becca Spielman, program director, Center for Safety and Empowerment, YWCA Northeast Kansas

Emily Steimel-Handy, public education coordinator, Center for Safety and Empowerment

SELF CARE: Importance of taking care of our physical & mental health, • benefits of focusing on you!

Dr. Rhonda Peterson Dealey, DSW, LCSW, MSW, program director, assistant professor, Dept. of Social Work, Washburn University

Brent Trammell, employee wellness coordinator, Washburn University

BEAUTY STANDARDS IN AMERICA: a look at pressures women face to meet what society deems as beautiful • different standards women face depending on their own personal characteristics of age, race, weight, sexual orientation, etc.

WOMEN ON WHEELS: Discussion about women's love for cars

Deanna Flanagan, SCCA

Ann Palmer, board member, Midwest Dream Car Collection

FREEDOM AFTER 50: Life after 50 • post-menopause benefits, empty-nesters • marriage & romance • feeling sexy after 50 • feeling of starting a new chapter in life

Dr. Leigh Eck, endocrinologist, The University of Kansas Health System

Dr. Jessica Kalender-Rich, geriatric medicine, hospice & palliative medicine

HOLIDAYS WITH !NSPIRE

THANKSGIVING TRADITIONS: History of America's Thanksgiving Holiday & Topeka Community

Thanksgiving Dinner • decorating & baking tips

David Silverman, professor of history, George Washington University

Pauline & Myron Johnson, the Topeka Community Thanksgiving Dinner

HOLIDAY TRADITIONS: Inspire Hosts share their special holiday traditions & favorite childhood holiday memories • managing expectations & stress during the holidays

Valerie Packham, adjunct instructor, Washburn University, licensed clinical psychotherapist



2022 LOCAL CONTENT AND SERVICE REPORT

STORIES OF IMPACT - "I'VE GOT ISSUES"

"I'VE GOT ISSUES" or **"IGI"** is a monthly community affairs series that delves into a wide range of intricate issues paramount to the community. **IGI** completed its 11th Season and started its 12th Season in FY22.

IGI HOSTS:

Val VanDerSluis, KTWU general manager

Dr. Bob Beatty, Washburn University professor of political science

LeTiffany Obozele, Kansas National Education Association staff attorney.



FY22 EPISODES

IGI: HISTORY OF WOMEN IN WAR

Features family members of women who helped pave the way for other women in service & were also featured in two documentaries; discussion with producer of both documentaries

James Theres, producer, **"SixTripleEight"** & **"The Hello Girls"**

Janice Martin, daughter of Indiana Hunt Martin

Carolyn Timbie, granddaughter of Grace Banker

IGI: "LIFE WITH BIG SONIA", A LOCAL FOLLOW-UP

A discussion with family members of Sonia Warshawski, one of the last remaining Holocaust survivors in Kansas City and star of **"Life with Big Sonia"**

Sonia Warshawski, star of **"Life with Big Sonia"**

Todd Soliday, director, editor

Leah Warshawski, producer, director

Regina Kort, Sonia's daughter

Debbie Warshawski, Sonia's daughter

IGI: COVID IN KANSAS UPDATE

Status update for COVID-19 and the Delta variant & what to do to protect yourself and others

Dusty Nichols, director, emergency management

Dr. Erin Locke, county health officer, Shawnee County, Kan.

IGI: KANSAS CAN SCHOOL DESIGN PROJECT

Discusses project that provides student empowerment, engagement & personalized experience

Dr. Tammy Mitchel, elementary school redesign specialist

Jay Scott, secondary school redesign specialist

Dr. Debbie Mercer, dean, education, Kansas State University

Dr. Brad Neuenswander, deputy commissioner, Kansas State Department of Education



2022 LOCAL CONTENT AND SERVICE REPORT

STORIES OF IMPACT - "I'VE GOT ISSUES"

IGI: AMERICAN POLLSTER: DR. ANN SELZER

A discussion about the role of polls and election surveys in American politics

Dr. Ann Selzer, *president, Selzer and Company*

Dr. Patrick Miller, *associate professor, political science, University of Kansas*

IGI: REMEMBERING BOB DOLE

Discussion about late Senator Bob Dole's accomplishments and impact on the political process

Dr. Amber Dickinson, *assistant professor, political science, Washburn University*

Dr. Michael Smith, *professor, political science, Emporia State University*

Steve Kraske, *host, KCUR Up to Date*

IGI: 2022 KANSAS LEGISLATIVE SESSION

A panel of experts discuss the 2022 Kansas legislative session and what issues will likely dominate

Tim Carpenter, *Senior Reporter, Kansas Reflector*

Jim McLean, *political correspondent, Kansas News Service*

Michael Smith, *political science professor, Emporia State University*

IGI: STATUS OF WOMEN IN KANSAS

Discussion on the recent findings of a study commissioned by United WE that shows the economic and societal effects of COVID on women in Kansas

Wendy Doyle, *president & CEO, United WE*

Dr. Donna Ginther, *Roy A. Roberts & Regents Distinguished Professor of History & director, Center For Science Technology & Economic Policy, Institute For Policy & Social Research, The University Of Kansas*

IGI: LEGISLATION - REDISTRICTING/PARENTS BILL OF RIGHTS

High-profile topics in the 2022 Kansas Legislative Session

Amber Dickinson, *political science professor, Washburn University*

Tim Carpenter, *senior reporter, Kansas Reflector*

Jim McLean, *political correspondent, Kansas News Service*

IGI: SEVERE WEATHER AND WILDFIRE PREPAREDNESS

Severe weather preparedness & the deadly wildfires in recent years within Kansas

Chad Omitt, *National Weather Service*

Dusty Nichols, *Shawnee county emergency management*

Eric Ward, *assistant fire management officer, Kansas Forest Service*



2022 LOCAL CONTENT AND SERVICE REPORT

STORIES OF IMPACT - "I'VE GOT ISSUES"

IGI: UKRAINE, TAKING REFUGE IN KANSAS

Conversations with Irina Nosok, a Ukrainian war refugee residing in Kansas with her children, and Yana Ross, a Topekan who was born in Ukraine.

Irina Nosok, *Ukrainian war refugee*

Yana Ross, *Topekan born in Ukraine*

IGI: KANSAS LEGISLATIVE REVIEW 2022

Analysis of 2022 Kansas Legislative session, exploring what decisions were made & how bills will impact Kansans

Tim Carpenter, senior reporter, *Kansas Reflector*

Dr. Michael Smith, professor, political science, *Emporia State University*

Dr. Alexandra Middlewood, assistant professor, political science, *Wichita State University*



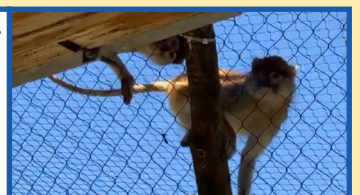
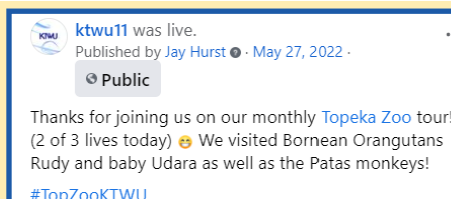
EAGLE SCOUT PROJECT BRINGS THE GIFT OF A NEW, UPGRADED KTWU LITTLE FREE LIBRARY

KTWU was the beneficiary of a wonderful gift from the community when Spencer Vail of Boy Scout Troop 193 offered to create a new KTWU Little Free Library. It was his creative vision and hard work that resulted in improvements to the much-loved and frequently utilized Little Free Library that resides in front of the KTWU building.



Spencer's Eagle Scout Project could not have been completed without several community donors: Andrews Asphalt & Construction, Sutherland Lumber and Benjamin Moore Paint Store; along with Spencer, Ben and Aaron Vail; for donating all the products and work needed to construct our new Little Free Library. It's the perfect addition to our community outreach services at KTWU!

#TopZooKTWU
Zoo Cams & Live Streams
Continue



2022 LOCAL CONTENT AND SERVICE REPORT STORIES OF IMPACT - "WORKING CAPITAL"

"WORKING CAPITAL", which features local and regional businesses, showcases entrepreneurship and serves to educate emerging entrepreneurs, inspire current business owners, and focus on specific business professionals, corporate leaders and innovative thinkers. Working Capital finished its 6th Season & began its 7th Season in FY22.

WORKING CAPITAL HOST:

JAY HURST, *KTWU Producer*

FY 22 Episode Topics

NEW OPPORTUNITIES IN BUSINESS

Discussion with non-traditional businesses about their entrepreneurial spirit and how they recognize opportunities.

Dustin Feuerborn, *Emerald Acres*

Ashley Feuerborn, *Emerald Acres*

Duncan Chen, *Amazing Lash Studio*

Shayla Pennington, *Amazing Lash Studio*

THE BUSINESS OF FINANCIAL PLANNING

Discussion on the business of financial planning

Debra Clayton, *Clayton Wealth Partners*

Randy Clayton, *Clayton Wealth Partners*



A CLEAN ENVIRONMENT FOR BUSINESS

Learn about a business that offers unique cleaning solutions and a consulting firm that helps other businesses manage environmental regulations

Jason Garland, *Unique Solution Services*

Christine Tipton, *EcoTec Associates*

BUSINESS AROUND THE TABLE

Discussion with Magic Meals Home Delivery and Round Table Bookstore

Angela Davis, *Magic Meals Home Delivery*

Stacey Davis, *Magic Meals Home Delivery*

Donna Schultz, *Round Table Bookstore*

Andrew Howard, *Round Table Bookstore*

Connecting to community business

Discussion with Dare to Dream Event Management and Milk and Honey Coffee Company

Cheryl Clark, *Dare to Dream Event Management*

Darlene Morgan, *Milk and Honey Coffee Company*

2022 LOCAL CONTENT AND SERVICE REPORT STORIES OF IMPACT - "I'VE GOT ISSUES"

MARKETING THE MARKET

Talk with owners of Topeka Vendors Market, Bedsprings and Burlap, and Oleander Cafe

Todd Konkel, *Topeka Vendors Market*

Nicolle Konkel, *Topeka Vendors Market*

Jill Beam, *Bedsprings and Burlap*

Nancy Jones, *Bedsprings and Burlap*

Zach Stanek, *Oleander Cafe*

VACAY, HOME AND AWAY

Discussion of unique home and away travel options, plus staycation opportunities

Tracy Jepson, *owner, Flying Fish Divers*

Chris Lemon, *owner, Flying Fish Divers*

Brendan Wiley, *CEO, Topeka Zoo*

PRIDE AND PASSION IN BUSINESS

Talk with local businesses Reliant Apparel and Nanny's Soul Food

Chris Applehantz, *Reliant Apparel*

Alan Smith, *Reliant Apparel*

Savonn Smith, *Nanny's Soul Food*

BUILDING AND SUSTAINING COMMUNITY

Discussion with Greater Topeka Partnership and Omni Circle Group

Glenda Washington, *Greater Topeka Partnership*

Laurie Pieper, *Greater Topeka Partnership*

Michael Odupitan, *Omni Circle Group*

PUTTING IT TOGETHER, ART & BUSINESS

A look at putting together art and local businesses

Amanda Wilson, *A+X Puzzles*

April Lemon, *More Than Lemons*

CYCLES OF BUSINESS

Discussion with local motorcycle and biking businesses

Mike Patterson, *Historic Harley Davidson*

Dan Hughes, *Sunflower Outdoor & Bike Shop*

BOOMING BUSINESS

We are making some noise with local music related businesses

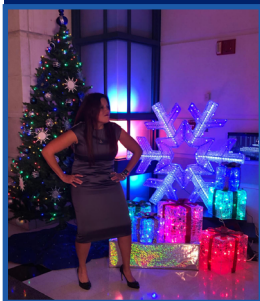
Jason Degenhardt, *Treehouse Custom Drums*

Eddie Wakes, *singer*



2022 LOCAL CONTENT AND SERVICE REPORT

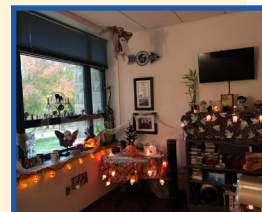
EVALUATING OUTCOMES, MEASURING IMPACT



KTWU STAFF MEMBERS ARE ACTIVE IN THEIR COMMUNITY!

SHORT LIST OF THEIR COMMUNITY ENGAGEMENT AND VOLUNTEERISM:

- ADJUNCT TEACHING
- AMERICAN FOUNDATION FOR SUICIDE PREVENTION
- BOY SCOUT LEADERSHIP
- CHURCH LEADERSHIP
- GIRL SCOUTS
- HUMANE SOCIETY
- IRISH FEST
- LITTLE LIBRARY PROJECT
- MINERVA CLUB
- PEO
- ROTARY CLUB
- WASHBURN UNIVERSITY LEADERSHIP GROUPS & ORGANIZATIONS
- YWCA WOMEN OF INFLUENCE
- YWCA CENTER FOR SAFETY AND EMPOWERMENT



***We enjoy our jobs, coworkers and our talent, which leads to having a little fun.
Enjoy our outtakes!***

KTWU broadcasts reach a potential audience of 1.6 million viewers

KTWU.org page views increased to 186,320

Watch.ktwu.org, where viewers can watch full-length local productions, page views were 72,038

Supporters logged 1,200 volunteer hours

KTWU sponsors shared messages of support on social media - in their own words, our sponsors shared with the community WHY they support public television.



1700 SW COLLEGE AVENUE
TOPEKA, KS 66621
785-670-1111

KTWU will continue to provide programs and services that enrich the lives of those we reach. Through our associations with community partners, KTWU multiplies the value of our programming and planned events by engaging viewers and participants together to address the important issues of our community, our state and our world.